



# Advisors Guide to the 2023 New York State Fair



**Ticket requests due on August 4<sup>th</sup> @ 11:59 PM**

Request tickets at <https://forms.office.com/r/y0V4GyAPXB>

## Master Schedule

Monday, August 21 <sup>st</sup> and Tuesday August 22 <sup>nd</sup>	Exhibit set up and project drop off
Wednesday, August 23 <sup>rd</sup>	Opening day of the fair! No CDE activities. Demonstration welcome.
Thursday, August 24 <sup>th</sup>	Ag Career Day @ The Great New York State Fair
Friday, August 25 <sup>th</sup>	<a href="#">Poultry Evaluation CDE @ 9 AM</a> <a href="#">Vegetable Crops ID/Horticulture CDE @ 11 AM</a>
Saturday, August 26 <sup>th</sup>	<a href="#">Agricultural Electrification CDE @ 9 AM</a> <a href="#">Small Gas Engines Troubleshooting CDE @ 9AM</a> <a href="#">Diesel Engines Troubleshooting CDE @ 9 AM</a>
Sunday, August 27 <sup>th</sup>	<a href="#">Horse Evaluation CDE @ 9:30 AM</a>
Monday, August 28 <sup>th</sup>	<a href="#">Agronomy CDE @ 9 AM</a> <a href="#">Milk Quality &amp; Products CDE @ 9 AM</a> <a href="#">Meats Evaluation &amp; Technology Activity @ 9 AM</a> <i>*This is an exhibition style activity. It is not a national qualifying event*</i>
Tuesday, August 29 <sup>th</sup>	<a href="#">Livestock Evaluation CDE @ 7:30 AM</a> <a href="#">Nursery/Landscape CDE @ 9 AM</a>
Wednesday, August 30 <sup>th</sup>	No CDE activities. Demonstration welcome.
Thursday, August 31 <sup>st</sup>	<a href="#">Dairy Cattle Evaluation CDE @ 7:45 AM</a> <a href="#">Dairy Cattle Handlers Activity @ 8 AM</a>
Friday, September 1 <sup>st</sup>	<a href="#">Environmental &amp; Natural Resources CDE @ 9 AM</a> <a href="#">Wildlife ID CDE @ 9 AM</a> <a href="#">Tree ID CDE @ 9 AM</a>
Saturday, September 2 <sup>nd</sup>	No CDE activities. Demonstration welcome.
Sunday, September 3 <sup>rd</sup>	No CDE activities. Demonstration welcome.
Monday, September 4 <sup>th</sup>	No CDE activities. Demonstration welcome. Removal of chapter exhibits begins.

**\*Registration for contests is due at 5 PM the day before the contest is schedule. For example, contests that are scheduled to occur on Tuesday, August 29<sup>th</sup> must have their team registration form submitted by 5 PM on Monday, August 28<sup>th</sup>. Please email [kko8@cornell.edu](mailto:kko8@cornell.edu) for assistance with online registration\***



## *Displays. Projects and Demonstrations*

### **Displays**

New York FFA chapters are encouraged to design and bring an educational display to the FFA building to help us highlight the amazing work done by FFA chapters throughout New York State! Displays must be in place by 10 AM on Wednesday, August 23<sup>rd</sup> and will remain on display through the conclusion of the fair. This year, money will be awarded to the chapters with the top display in each of the following categories:

- Agribusiness Systems
- Animal Systems
- Biotechnology Systems
- Environmental Service Systems
- Food Products and Processing
- Natural Resources Systems
- Plant Systems
- Power, Structural and Technical Systems

Agriscience fair posters are also eligible for submission to the state fair.

### **Projects**

New York FFA members Learn by Doing and build some amazing projects over their career in agriculture education. New York FFA would like to display members amazing projects at the New York State Fair. From sawhorses to flower arrangements to welding projects, we welcome them all! Projects must be brought to the FFA building prior to the start of the fair and pick-up of projects can be arranged at the time of entry.

### **Demonstration**

The FFA building is always looking for unique ways to engage the public with components of agricultural education. FFA members are welcome to join us throughout the fair to share their knowledge. Demonstrations can include building or modeling a technique, a presentation of an LDE contest presentation, etc. Email [thughes@cornell.edu](mailto:thughes@cornell.edu) to sign up for a demonstration time slot!



# *Career Development Events*

## **Quick Guide**

### **Junior vs. Senior Teams**

Junior – All team members entering grades 6 through 8 in the fall of 2023. Junior teams are not eligible to advance past the state fair.



Senior – All team members entering grades 6 through 12 in the fall of 2023. Many, but not all, contests offer opportunities to advance to regional or national level competitions. Advancement opportunities for senior teams are listed with each individual contest below.

*\*Chapters with students who graduated in June of 2023 and intend to compete at the state fair must contact Kelsey O'Hare at [kko8@cornell.edu](mailto:kko8@cornell.edu) for additional information\**

### **Dress Code/Attire**

Due to the nature of contest hosted at the state fair, and the weather, official dress is not recommended. It is recommended that competitors wear FFA apparel or other school appropriate attire.

### **Additional Planning Reminders:**

- **All ticket and parking passes must be requested by 11:59 PM on August 4<sup>th</sup>. Tickets and parking passes can be requested [HERE](#)**
  - Most contests begin in the morning (see specific times below) and there is a break around lunch time before awards are presented in the afternoon.
  - Please allow some extra time to park and get through the gates and to the FFA building. The state fair does have security and may check bags upon entry to the fair.
  - The fair does not officially open until 9 AM. You may encounter lines of guests waiting to enter the grounds. The tickets you receive allow for you to be admitted before 9 AM so you may have to maneuver through the group to find the front of the line.
- 
- 

## **Poultry Evaluation CDE**

**Date:** Friday, August 25<sup>th</sup>, 2023 @ 9 AM

Team registration due @ 5 PM on Thursday, August 24<sup>th</sup>.

[Register Here](#)

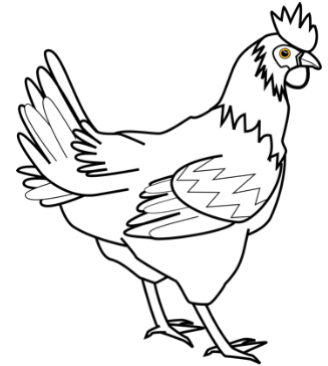
**Number of Team Members:** 4

**Advancing information:** 1<sup>st</sup> place Senior team is eligible to advance to the National FFA Convention & Expo schedule to occur in Indianapolis, IN from November 1<sup>st</sup> through 4<sup>th</sup>. 2<sup>nd</sup> place Senior team is eligible to advance to The Big E Poultry Evaluation contest schedule to occur in Springfield, MA on Saturday, September 16<sup>th</sup>.

**Contest components:**

- Egg Type Hen Placing Class with Oral Reasons
- Carcass Parts Identification
- Ready to Cook Poultry – Carcass Grading
- Shell Eggs – Interior Grading
- Shell Eggs – Exterior Grading & Written Factors
- Further Processed Poultry
- Written Exam

[National FFA Poultry Evaluation CDE Handbook](#)  
[Poultry Evaluation CDE Sample Scantron](#)



## **Vegetable Crops/Horticulture CDE**

**Date:** Friday, August 25<sup>th</sup>, 2023 @ 11 AM

Team registration due @ 5 PM on Thursday, August 24<sup>th</sup>.

[Register Here](#)

**Number of Team Members:** 4 \*top 3 scores used to calculate team score\*

**Advancing information:** This contest does not advance past The New York State Fair.

**Contest components:**

- Written exam – plant production and preparation focus
- Placing classes – can include fruits/vegetable, flowers, or other plants
- Identification of flowers, ornamentals, fruits/nuts and vegetables

[National Junior Horticulture Association Identification List](#)  
[Vegetable Crops/Horticulture CDE Sample Scantron](#)



## **Agricultural Electrification CDE**

**Date:** Saturday, August 26<sup>th</sup>, 2023 @ 9 AM

Team registration due @ 5 PM on Friday, August 25<sup>th</sup>.

[Register Here](#)

**Number of Team Members:** 2

**Advancing information:** This contest does not advance past The New York State Fair.

**Contest components:**

- Written quiz
- Identification & Testing of Electrical Devices
- Wire a circuit from a wiring diagram



## ***Small Gas Engines Troubleshooting CDE***

**Date:** Saturday, August 26<sup>th</sup>, 2023 @ 9 AM

Team registration due @ 5 PM on Friday, August 25<sup>th</sup>.

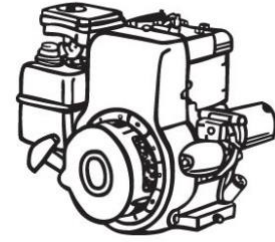
[Register Here](#)

**Number of Team Members:** 2

**Advancing information:** This contest does not advance past The New York State Fair.

**Contest components:**

- Written quiz
- Parts & Tool Identific4ation
- Hands on practicum of topics such as ignition system timing, valve tappet clearance adjustment, 2 or 4-stroke carburetor adjustment



## ***Diesel Engine Troubleshooting CDE***

**Date:** Saturday, August 26<sup>th</sup>, 2023 @ 9 AM

Team registration due @ 5 PM on Friday, August 25<sup>th</sup>.

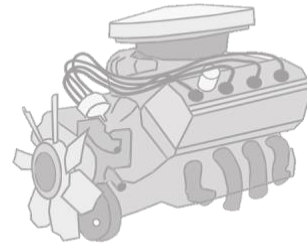
[Register Here](#)

**Number of Team Members:** 2

**Advancing information:** This contest does not advance past The New York State Fair.

**Contest components:**

- Written quiz
- Tractor Diesel Engine Parts ID
- Parts failure ID
- Troubleshoot a system failure
- Electronic System Analysis
- Injector Tester Station



## ***Horse Evaluation CDE***

**Date:** Sunday, August 27<sup>th</sup>, 2023 @ 9 AM

Team registration due @ 5 PM on Saturday, August 26<sup>th</sup>.

[Register Here](#)

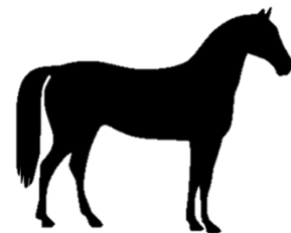
**Number of Team Members:** 4

**Advancing information:** 1<sup>st</sup> place Senior team is eligible to advance to the National FFA Convention & Expo schedule to occur in Indianapolis, IN from November 1<sup>st</sup> through 4<sup>th</sup>. 2<sup>nd</sup> place Senior team is eligible to advance to The Big E Horse Evaluation contest schedule to occur in Springfield, MA on Saturday, September 16<sup>th</sup>.

**Contest components:**

- Placing of six to eight classes
- Two sets of oral reasons (typically one halter and one performance)
- Questions will be asked on one class

**National FFA Horse Evaluation CDE Handbook**



## **Agronomy CDE**

**Date:** Monday, August 28<sup>th</sup>, 2023 @ 9 AM

Team registration due @ 5 PM on Sunday, August 27<sup>th</sup>.

[Register Here](#)

**Number of Team Members:** 4

**Advancing information:** 1<sup>st</sup> place Senior team is eligible to advance to the National FFA Convention & Expo schedule to occur in Indianapolis, IN from November 1<sup>st</sup> through 4<sup>th</sup>.

**Contest components:**

- Written Exam
- Plant & Seed Identification
- Soils
- Pest Management

[National FFA Agronomy CDE Handbook](#)  
[Agronomy CDE Sample Scantron](#)



## **Milk Quality & Products CDE**

**Date:** Monday, August 28<sup>th</sup>, 2023 @ 9 AM

Team registration due @ 5 PM on Sunday, August 27<sup>th</sup>.

[Register Here](#)

**Number of Team Members:** 4

**Advancing information:** 1<sup>st</sup> place Senior team is eligible to advance to the National FFA Convention & Expo schedule to occur in Indianapolis, IN from November 1<sup>st</sup> through 4<sup>th</sup>. 2<sup>nd</sup> place Senior team is eligible to advance to The Big E Milk Quality & Products CDE contest schedule to occur in Springfield, MA on Saturday, September 16<sup>th</sup>.

**Contest components:**

- Written Exam
- Milk Flavor Identification
- Cheese Identification OR Product Identification
- CMT test OR Bacteria test OR Problem Solving
- Team Activity

[National FFA Milk Quality & Products CDE Handbook](#)  
[Milk Quality & Products CDE Sample Scantron](#)



## **Meats Evaluation & Technology Activity**

**Date:** Monday, August 28<sup>th</sup>, 2023 @ 10:30 AM

[Register Here](#)

**Advancing information:** **This is an activity only. This is not a qualifying event for any regional or national contest.**

**Contest components:**

- Written Exam
- Retail Cuts ID
- Retail Cuts Placement
- Team Activity

[National FFA Meats Evaluation & Technology CDE Handbook](#)  
[Meats Evaluation & Technology CDE Sample Scantron](#)



## ***Livestock Evaluation CDE***

**Date:** Tuesday, August 29<sup>th</sup>, 2023 @ 7:30 AM

Team registration due @ 5 PM on Monday, August 28<sup>th</sup>.

[Register Here](#)

**Number of Team Members:** 4

**Advancing information:** 1<sup>st</sup> place Senior team is eligible to advance to the National FFA Convention & Expo schedule to occur in Indianapolis, IN from November 1<sup>st</sup> through 4<sup>th</sup>. 2<sup>nd</sup> place Senior team is eligible to advance to The Big E Livestock Evaluation CDE contest schedule to occur in Springfield, MA on Friday, September 15<sup>th</sup>.

**Contest components:**

- Six classes of four animals each
- Three sets of oral reasons
- Three sets of questions

[National FFA Livestock Evaluation CDE Handbook](#)

[Livestock Evaluation CDE Sample Scantron](#)



## ***Nursery/Landscape CDE***

**Date:** Tuesday, August 29<sup>th</sup>, 2023 @ 9 AM

Team registration due @ 5 PM on Monday, August 28<sup>th</sup>.

[Register Here](#)

**Number of Team Members:** 4

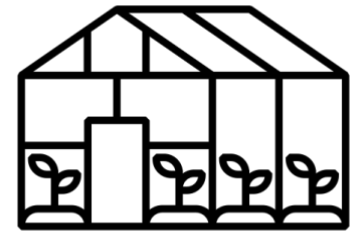
**Advancing information:** 1<sup>st</sup> place Senior team is eligible to advance to the National FFA Convention & Expo schedule to occur in Indianapolis, IN from November 1<sup>st</sup> through 4<sup>th</sup>. 2<sup>nd</sup> place Senior team is eligible to advance to The Big E Nursery/Landscape CDE contest schedule to occur in Springfield, MA on Saturday, September 16<sup>th</sup>.

**Contest components:**

- General Knowledge Exam with Landscape Estimate
- Identification of Plants, Pests, Disorders, Equipment and Supplies
- Verbal or Written Customer Assistance
- Nursery Propagation or Potting
- Team Activity
- Team Skills Challenge

[National FFA Nursery/Landscape CDE Handbook](#)

[Nursery/Landscape CDE Sample Scantron](#)



## ***Dairy Cattle Evaluation CDE***

**Date:** Thursday, August 31<sup>st</sup>, 2023 @ 8 AM

Team registration due @ 5 PM on Wednesday, August 30<sup>th</sup>.

[Register Here](#)

**Number of Team Members:** 4

**Advancing information:** 1<sup>st</sup> place Senior team is eligible to advance to the National FFA Convention & Expo schedule to occur in Indianapolis, IN from November 1<sup>st</sup> through 4<sup>th</sup>. 2<sup>nd</sup> place Senior team is eligible to advance to The Big E Dairy Cattle Evaluation CDE contest schedule to occur in Springfield, MA on Saturday, September 16<sup>th</sup>.

**Contest components:**

- General Knowledge Exam
- Dairy Management Team Activity
- Six classes consisting of heifers, young cows and mature cows
- Two sets of oral reasons

[National FFA Dairy Cattle Evaluation CDE Handbook](#)

[Dairy Cattle Evaluation CDE Sample Scantron](#)

## ***Dairy Cattle Handlers Activity***

**Date:** Thursday, August 31<sup>st</sup>, 2023 @ 8 AM

Team registration due @ 5 PM on Wednesday, August 30<sup>th</sup>.

[Register Here](#)

**\*Limit of 32 contestants. Schools with multiple competitors may be asked to drop one or more of their contestants due to event capacity\***

**\*\*This contest occurs at the same time as Dairy Cattle Evaluation. Students cannot participate in Dairy Cattle Evaluation and Dairy Cattle Handlers in the same year\*\***

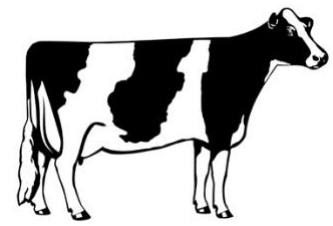
**Number of Team Members:** 1

**Advancing information:** 1<sup>st</sup> place individual is eligible to advance to the National FFA Convention & Expo schedule to occur in Indianapolis, IN from November 1<sup>st</sup> through 4<sup>th</sup>. 1<sup>st</sup> through 4<sup>th</sup> place individuals are eligible to advance to The Big E Dairy Cattle Evaluation CDE contest schedule to occur in Springfield, MA on Saturday, September 16<sup>th</sup>.

**Contest components:**

- Showmanship of one or more dairy animals

[National FFA Dairy Cattle Handlers Activity Handbook](#)





## ***Environmental & Natural Resources CDE***

**Date:** Friday, September 1<sup>st</sup>, 2023 @ 9 AM

Team registration due @ 5 PM on Thursday, August 31<sup>st</sup>.

[Register Here](#)

**Number of Team Members:** 4

**Advancing information:** 1<sup>st</sup> place Senior team is eligible to advance to the National FFA Convention & Expo schedule to occur in Indianapolis, IN from November 1<sup>st</sup> through 4<sup>th</sup>.

**Contest components:**

- Tree Identification Event
- Wildlife Identification Event
- Written Exam
- Identification of environmental equipment & apparatus
- Water or Soil test evaluation

**National FFA Environmental & Natural Resources CDE Handbook**



## ***Wildlife Identification CDE***

**Date:** Friday, September 1<sup>st</sup>, 2023 @ 9 AM

Team registration due @ 5 PM on Thursday, August 31<sup>st</sup>.

[Register Here](#)

**Number of Team Members:** 2

**Advancing information:** This contest does not advance past The New York State Fair.

**Contest components:**

- Written Exam
- Identification of wildlife including equipment, pictures of wildlife, scat replicas, furs/mounts, track molds and sounds

**Wildlife Identification CDE Sample Scantron**



## ***Tree Identification CDE***

**Date:** Friday, September 1<sup>st</sup>, 2023 @ 9 AM

Team registration due @ 5 PM on Thursday, August 31<sup>st</sup>.

[Register Here](#)

**Number of Team Members:** 2

**Advancing information:** This contest does not advance past The New York State Fair.

**Contest components:**

- Written Exam
- Identification of tree samples

**Tree Identification CDE Sample Scantron**

